

CBD20/25/30-470 Electric Ride-on Pallet Truck



Configuration and performance

- Electronic power steering system, light and low noise.
- Drive unit floating bodies with patent design.
- AC Driving system, No carbon brush, maintenance free.
- Electromagnetic, regenerative braking system.
- Automatic lifting limit, extend the life of the battery and motor.

Safety

- Curve automatic deceleration devices, more safe.
- Stepless speed control system, safe and quiet.
- Controller with Multiple automatic protection.
- Emergency reversing device/ Emergency brake switch.

Option

- Lithium battery

EPS IAC

Steering automatic deceleration

Customized Wide Legs

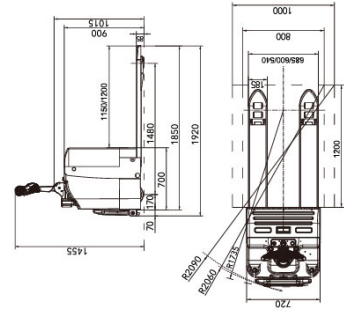
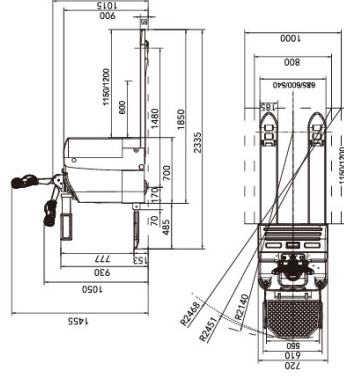
© The difference between CBD20-470 and CBD20-460

| Model | Load capacity (kg) | Battery capacity (Ah) | | Overall fork width (mm) | Battery installation |
|-------|--------------------|-----------------------|--------|-------------------------|----------------------|
| | | Standard | OPTION | | |
| 470 | 2000-3000 | 280 | 360 | 540/600/650/685/1070 | Hoisting |
| 460 | 2000-3000 | 270 | 210 | 550/600/650/685 | Side-loaded battery |

CBD20/25/30-470

| Feature | |
|---------------------------------------|---|
| Model | CBD20/25/30-470 |
| Loading capacity | 2000/2500/3000 |
| Load center | 600 |
| Wheel base | 1480 |
| Operating type | Stand On |
| Wheels | |
| Wheels type | PU |
| Wheel quantity | 1/2/4 |
| Driving wheel size | φ248×75 |
| Bearing wheel size | φ84×80(Double wheels) |
| Balance wheel size | φ115×55 |
| Dimension | |
| Min.fork lowered height | 85 |
| Max.fork lifting height | 205 |
| Max.lifting height | 120 |
| Overall fork width | 540/600/650/685 |
| Inside width between forks | 200/260/310/345 |
| Fork length | 1150/1200 |
| Fork width | 170 |
| Fork thickness | 75 |
| Overall length | 1920/2335 |
| Overall width | 720 |
| Overall height(With handle) | 1455 |
| Overall height(Without handle) | 900 |
| Min.Turning radius | 1735/2140 |
| Min.Aisle width for pallets 800×1200 | 2060/2451 |
| Min.Aisle width for pallets 1000×1200 | 2090/2468 |
| Performance | |
| Travel speed,laden/unladen | 6/16 |
| Lift speed,laden/unladen | 30/35 |
| Lowering speed,laden/unladen | 40/35 |
| Gradeability,laden/unladen | 6/16 |
| Electrical configuration | |
| Drive motor | kW AC 1.5 |
| Lift motor | kW DC 1.2 |
| Steering motor | kW DC 0.15 |
| Brake | Electromagnetic/Regenerative |
| Battery | |
| Battery voltage / capacity | V/Ah Lead acid battery Lithium battery (Optional) |
| Controller | Z4/Z280 ZAPI |
| Battery weight | kg 238 104 |
| Service weight with battery | kg 784 613 |

* Details of specifications and equipment are based on information available at time of printing and may change without notice.



ANHUI HELI CO., LTD.

ADD: NO.648 Fuyang Street Economic Development Zone, Hefei, P.R.China
 TEL: (86 551)63639068 (America) 63639258 (Europe) 63639358 (Asia)
 63662105 (Africa & Middle East) 63639530 (Key Accounts division)
 63662105 (Wheel loader)
 FAX: (86 551)63639966
 WEBSITE: <http://www.heliforklift.net>
 Email: helih@helichina.net

AUTHORIZED DEALER